

BIRTH+

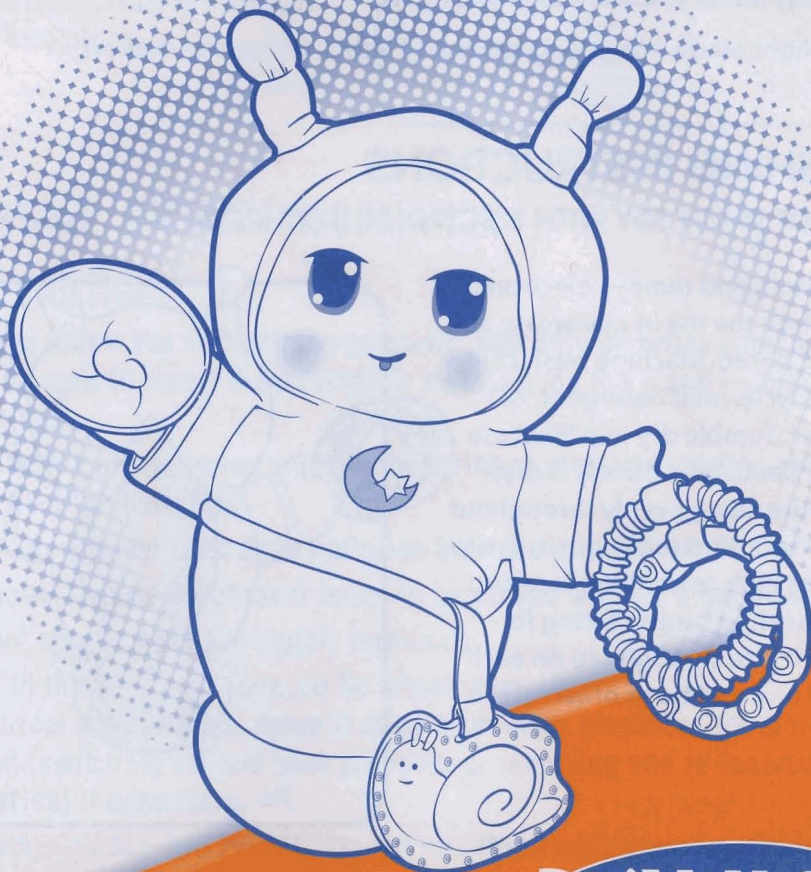
# Gloworld™

## Sensory Gloworm™

POWERED BY  
**POWER FUEL**

**x3** 1.5V AA  
R6 size  
**BATTERIES INCLUDED**

Replace with 3 x 1.5V "AA" or R6 size batteries. Alkaline batteries recommended. Phillips/cross head screwdriver (not included) needed to replace batteries.

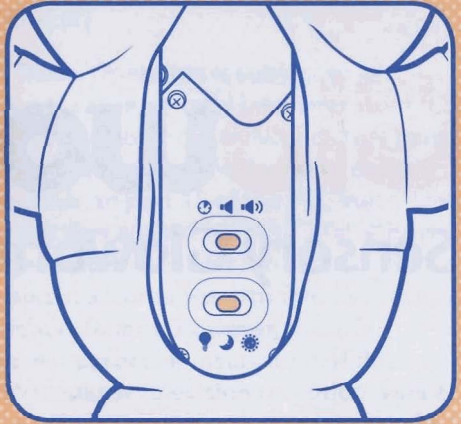


**PLAYSKOOL**

## TO USE

**NOTE:** This product is shipped in "Try Me Mode" mode. Open seam on back and slide switch to "On" for the full range of features.

-  On
-  Off
-  Try Me Mode



 Lights Only

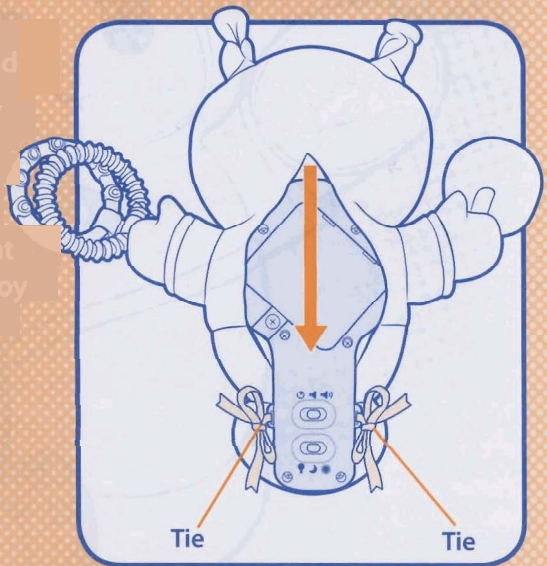
 Day Mode – Active songs and lights

 Night Mode – Soothing tunes and lights, with auto-shut off

## WASHING INSTRUCTIONS

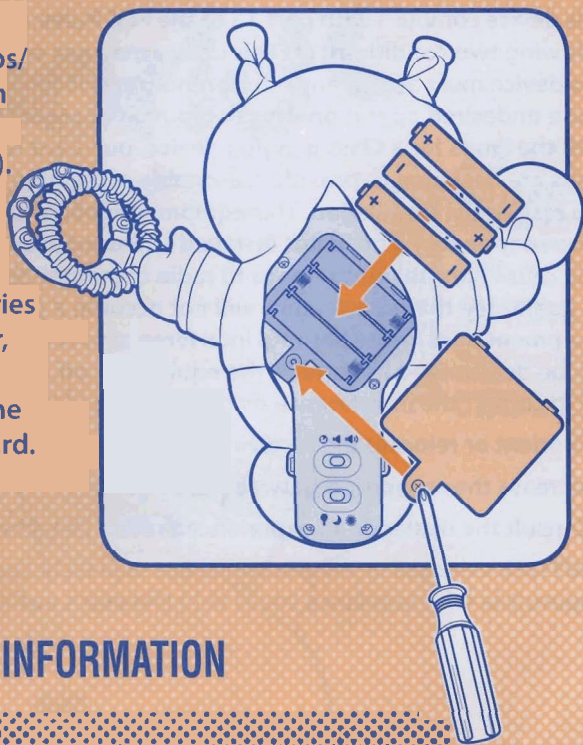
(DO NOT WASH TOY WITH ELECTRONIC UNIT INSIDE!)

Untie laces and remove electronic unit. Place the toy in pillowcase and tie end closed. Machine wash cold, gentle cycle, mild detergent, NO BLEACH. Tumble dry in pillowcase on low heat. After the toy is dry, distribute filling evenly throughout body. Place electronic unit in the toy with the bulb toward the face and the activation button facing forward. Fit lace through tab on each side of unit and tie to other lace.



## TO INSERT BATTERIES:

Untie laces and remove the electronic unit. Using a Phillips/crosshead screwdriver, loosen screw in battery cover (screw will remain attached to cover). Remove old batteries and insert 3 fresh 1.5V "AA" or R6 size batteries into battery compartment. Alkaline batteries recommended. Replace cover, retighten screw and put electronic unit back inside with the light and button facing forward. Tie unit into place.



## IMPORTANT: BATTERY INFORMATION



### CAUTION:

1. Always follow the instructions carefully. Use only batteries specified and be sure to insert them correctly by matching the + and - polarity markings.
2. Do not mix old batteries and new batteries or standard (carbon-zinc) with alkaline batteries.
3. Remove exhausted or dead batteries from the product.
4. Remove batteries if product is not to be played with for a long time.
5. Do not short-circuit the supply terminals.
6. Should this product cause, or be affected by, local electrical interference, move it away from other electrical equipment. Reset (switching off and back on again or removing and re-inserting batteries) if necessary.
7. **RECHARGEABLE BATTERIES:** Do not mix these with any other types of batteries. Always remove from the product before recharging. Recharge batteries under adult supervision. **DO NOT RECHARGE OTHER TYPES OF BATTERIES.**

## FCC STATEMENT

This device complies with part 15 of the FCC Rules. Operation is subject to the following two conditions: (1) This device may not cause harmful interference, and (2) this device must accept any interference received, including interference that may cause undesired operation. This equipment has been tested and found to comply with the limits for a Class B digital device, pursuant to part 15 of the FCC Rules. These limits are designed to provide reasonable protection against harmful interference in a residential installation. This equipment generates, uses and can radiate radio frequency energy, and, if not installed and used in accordance with the instructions, may cause harmful interference to radio communications. However, there is no guarantee that interference will not occur in a particular installation. If this equipment does cause harmful interference to radio or television reception, which can be determined by turning the equipment off and on, the user is encouraged to try to correct the interference by one or more of the following measures:

- Reorient or relocate the receiving antenna.
- Increase the separation between the equipment and receiver.
- Consult the dealer or an experienced radio/TV technician for help.

**CAUTION:** Changes or modifications not expressly approved by the party responsible for compliance could void the user's authority to operate the equipment.



© 2009 Hasbro. All Rights Reserved.  
TM & ® denote U.S. Trademarks.

P/N 6983520000

39334/393330000Asst.



Questions? Call 1-800-PLAYSKL